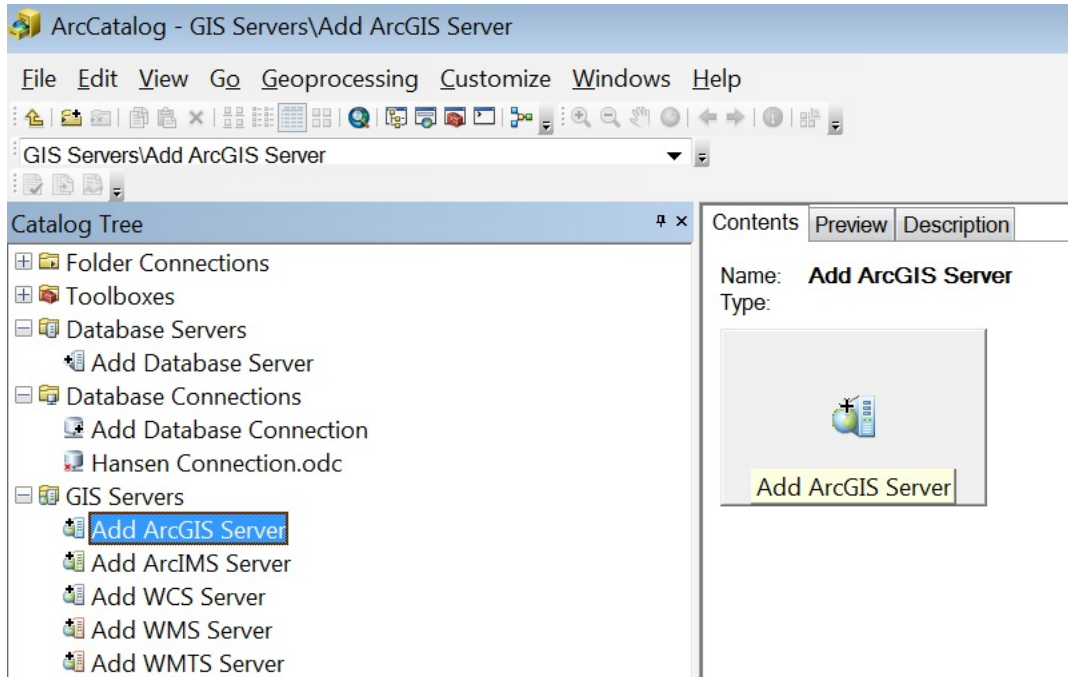
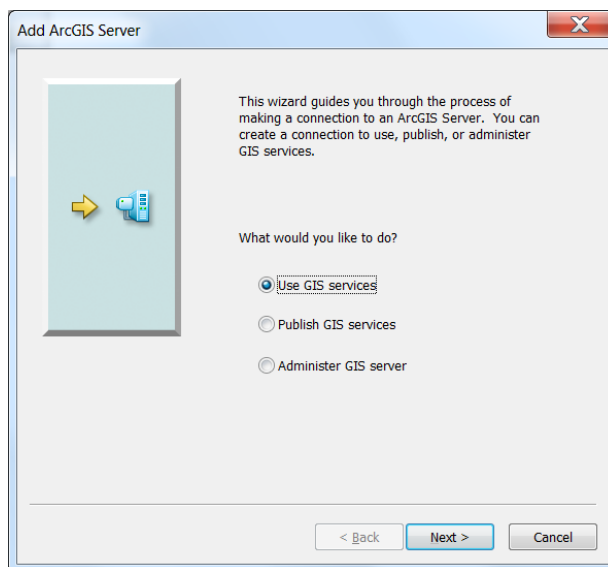


Adding Cecil Maps as a GIS Service

- 1) Open Arc Catalog
- 2) In the Catalog Tree, expand “GIS Servers” and double click on “Add ArcGIS Server”



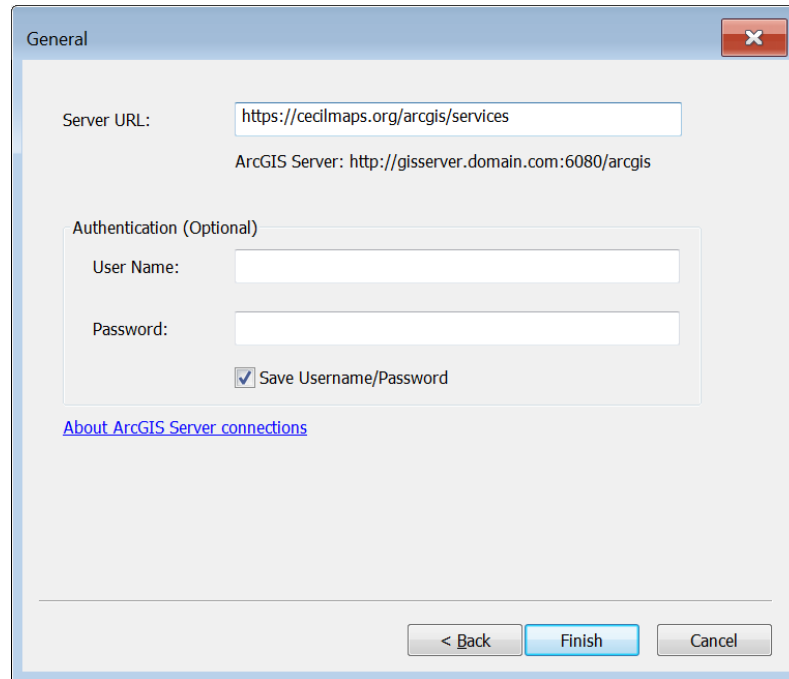
- 3) Choose “Use GIS services”



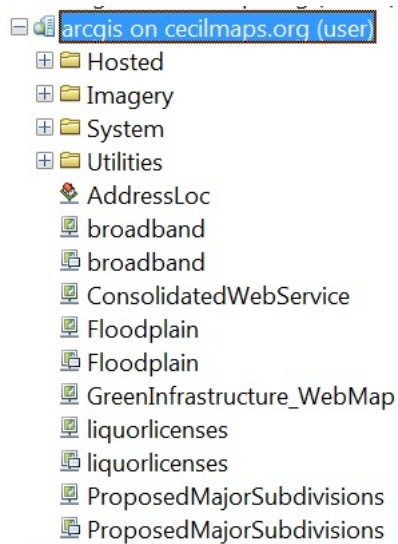
4) In the next screen, type:

<https://cecilmaps.org/arcgis/services>

in the Server URL box. Leave everything else blank and click finish.



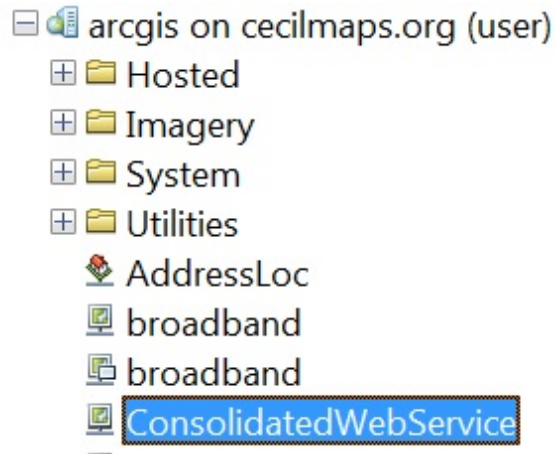
5) Double click on the new connection that appears in the GIS Servers drop down list. (It is named arcgis on cecilmaps.org)



- 6) You'll then see all the services that can be brought into ArcMap (either by dragging and dropping or by using the "Add Data" button in ArcMap).

Important Notes

- a) The service named "ConsolidatedWebService" contains the parcel, road centerline, address point, etc. services found in the County's online GIS application (<https://cecilmaps.org>)



- b) Aerial imagery services are located within the folder named "Imagery." Please expand the folder to see the individual years.

